

309, 2 Great George Street, Leeds, LS1 3BW

£199,995



- Grade II Listed Building
- Protected by ICW 10 year warranty
- Doorman
- Concierge service
- Two double bedroom suites
- Separate dining kitchen
- Large light and airy living room
- Sonos surround sound with ceiling mounted speakers throughout
- Residents Gym
- Communal Roof Terrace With City Views

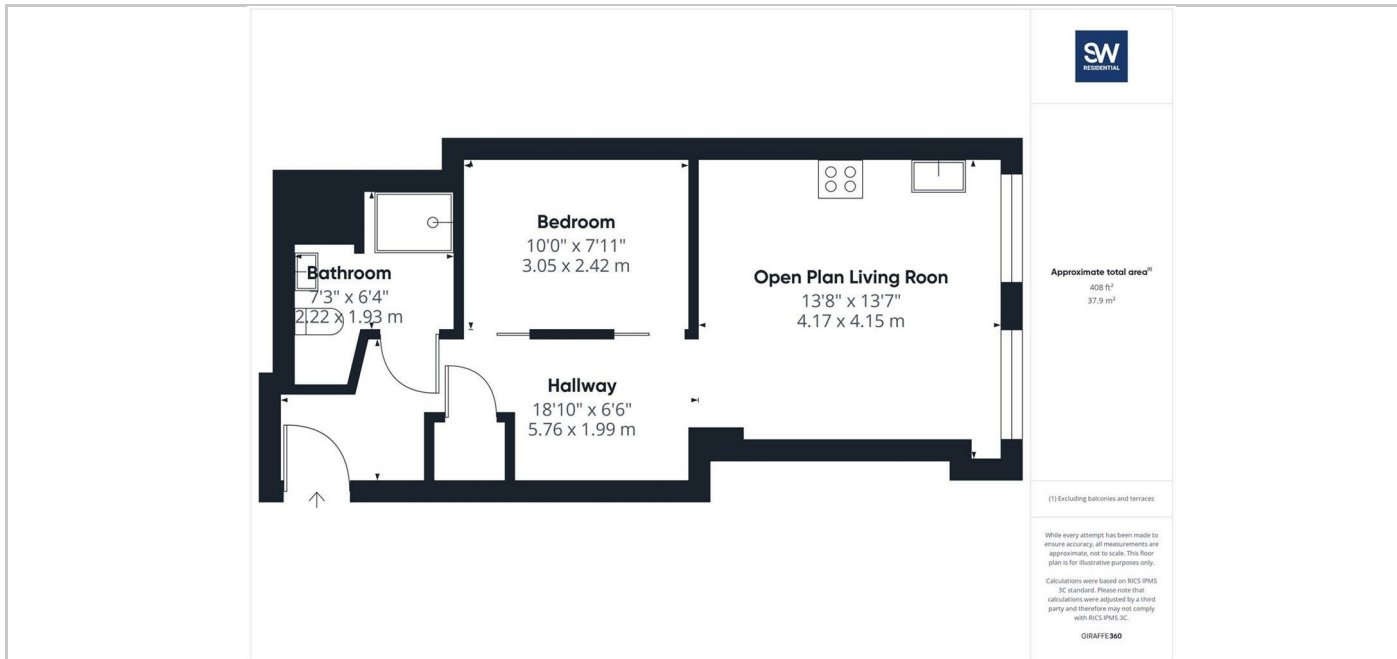
THE PROPERTY

A fantastic opportunity to purchase this stunning two bedroom duplex apartment at the sought after 2 Great George Street development in the heart of Leeds City Centre.

This apartment offers a stylish blend of contemporary living with all the state of the art amenities you could require along with the convenience of City centre living and would appeal to either a first time buyer or investor.

The apartment has an open plan living area and kitchen along with a bedroom accessed via sliding doors from the hallway and a contemporary bathroom.

In addition to the fantastic space that this apartment offers, the apartment also includes access to the communal facilities available within the development including a residents only gym on the ground floor, concierge services and access to the communal rooftop terrace providing outdoor relaxation space along with breathtaking City views.



SITUATION

Directions

6th Floor Central Square, 29 Wellington Street, West Yorkshire, LS1 4DL
 Tel: 0113 221 6000 Email: residential@sw.co.uk